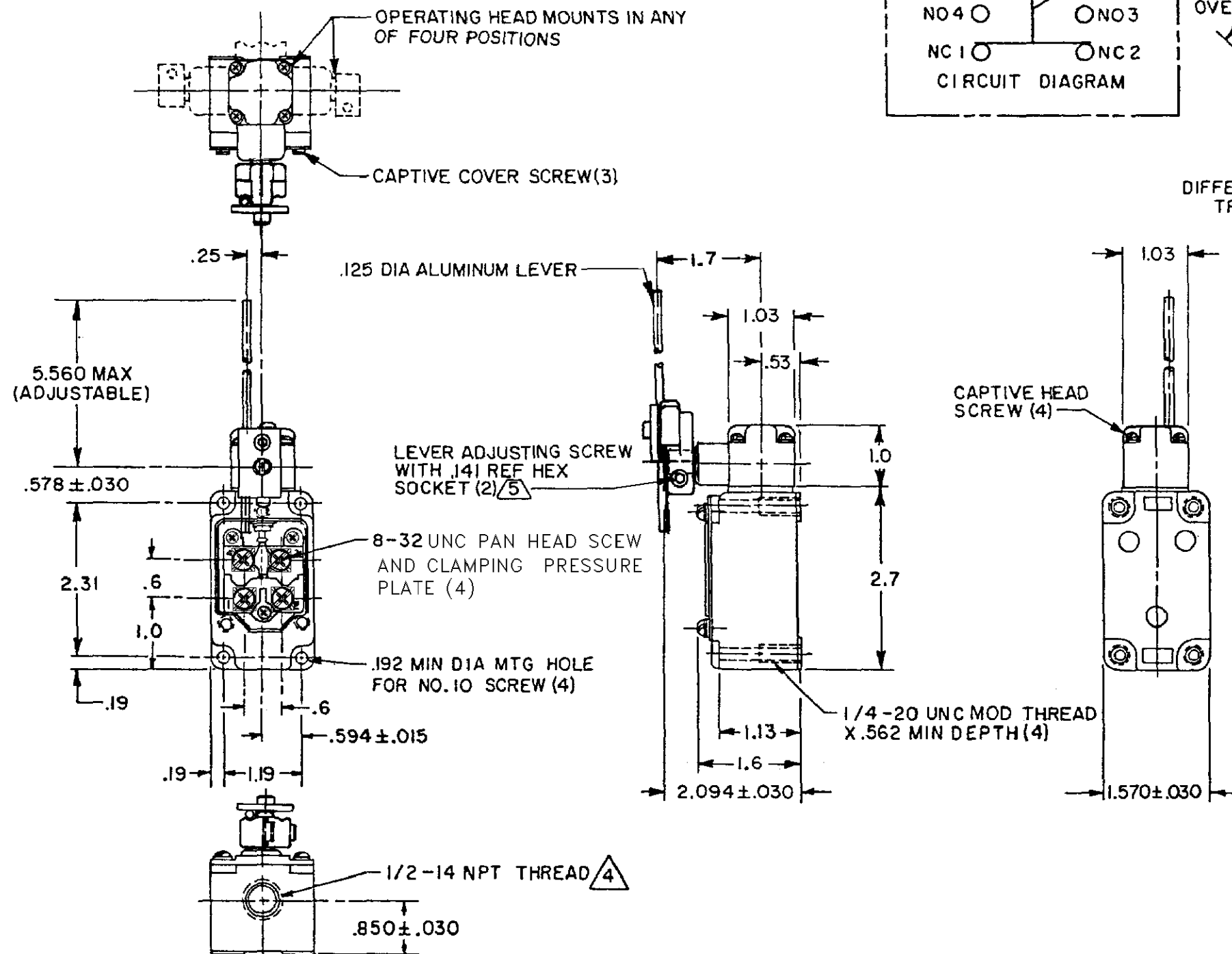
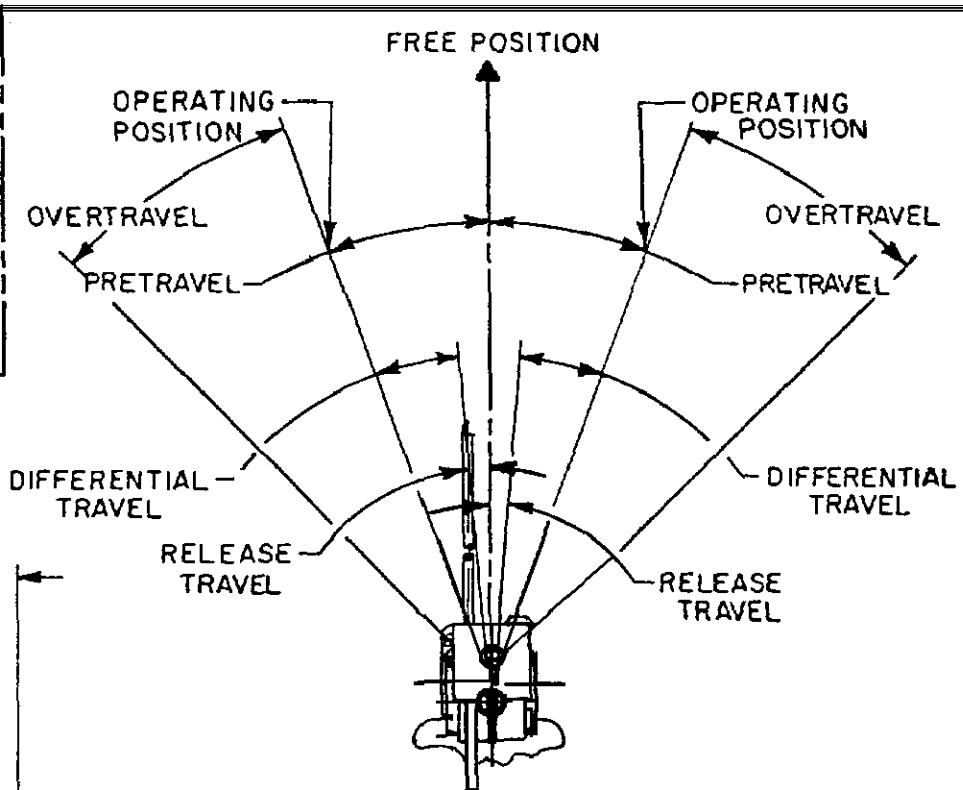
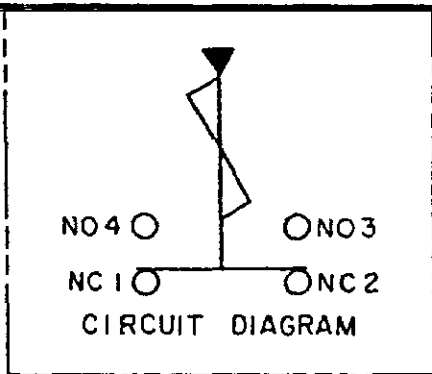


**MICRO SWITCH**  
a Honeywell Division

FED. MFG. CODE 91929

**SWITCH-ENCLOSED**

CATALOG LISTING  
**1LS10-L**



CATALOG LISTING  
1LS10-L  
REPLACES PR-9797  
RELEASE NO. PR-9797  
PAGE 1 OF 1  
ISSUE 15  
REVISIONS  
A CG-76997  
GJW 14 MAR 95  
CHECK  
5 MAY 95  
JAF  
CHECK  
14 APR 95  
GJW  
DRAWN  
FORMTEK

THIS DRAWING COVERS A PROPRIETARY ITEM AND IS THE PROPERTY OF MICRO SWITCH, A DIVISION OF HONEYWELL. THIS DRAWING IS NOT TO BE COPIED OR USED WITHOUT THE APPROVAL OF MICRO SWITCH		THIRD ANGLE PROJECTION 
CHARACTERISTICS		SCALE 1/2 TO 1
OPERATING TORQUE----- 1.7 IN-LB MAX	ELECTRICAL DATA CONTACT ARRANGEMENT (SEE CIRCUIT DIAGRAM)	DO NOT SCALE PRINT
FULL OVERTRAVEL TORQUE----- 2.4 IN-LB MAX		UNLESS OTHERWISE SPECIFIED TOLERANCES ARE
RELEASE TORQUE----- .35 IN-LB MIN	L126 10A 125, 250 OR 480 VAC	ONE PLACE (.0) ±.030
PRETRAVEL ----- 20° MAX	1/3HP 125 VAC, 3/4HP 250 VAC	TWO PLACE (.00) ±.015
DIFFERENTIAL TRAVEL ----- 12° MAX	0.8A 125 VDC, 0.4A 250 VDC	THREE PLACE (.000) ±.005
OVERTRAVEL ----- 30° MIN		ANGLES ±
RELEASE TRAVEL ----- 5° MIN		WEIGHT
BASIC SWITCH REPLACEMENT ----- 2MNI-L		

- NOTES**
- SWITCH IS ASSEMBLED FOR ACTUATION IN BOTH DIRECTIONS BUT MAY BE ADJUSTED TO ACTUATE IN EITHER THE CLOCKWISE DIRECTION ONLY OR THE COUNTERCLOCKWISE DIRECTION ONLY
  - TO CONVERT SWITCH FOR ACTUATION IN EITHER THE CLOCKWISE OR COUNTERCLOCKWISE DIRECTION ONLY, REMOVE ACTUATOR HEAD AND ROTATE THE NOTCHED PLUNGER 90° TO THE RIGHT FOR CLOCKWISE ACTUATION OR 90° TO THE LEFT FOR COUNTERCLOCKWISE ACTUATION
- 4 SEAL TO BE FURNISHED BY USER  
5 ROLLER LEVER MAY BE LOCKED IN ANY POSITION THRU 360°  
6 LEVER FURNISHED UNASSEMBLED IN UNIT PACKING BOX

